



Student Handbook



Charles
University



Charles University in numbers

Source: Charles University Annual Report 2022

17 faculties in 3 cities
(Prague, Plzeň, Hradec Králové)

51 727 students
(of which 32,067 are women)

8 776 employees

11 282 international students

6 609 doctoral candidates (Ph.D. students)

4 008 academic staff

1 089 research staff

953 study programmes

285 study programmes
in a foreign language

991 students with specific needs

17 dormitories

8 canteens

66 992 applications to all
study programmes (2022)

744 foreign academic
and research staff

891 partner institutions under
the Erasmus+ Programme

2 182 students arrived under
the Erasmus+ Programme (in one year)

7 870 new graduates

You've come to the right place!

Dear students,

Welcome to the oldest, largest, and undoubtedly the best university in Czechia. As per the latest prestigious QS ranking, we are one of the top 250 universities in the world, representing the top 1.5 percent of the highest quality educational institutions globally. **You have made the right choice!** As the rector of Charles University, I am delighted that you selected one of our 17 faculties for your higher education studies.



Professor Milena Králíčková
Rector of Charles University

Králíčková'



Charles University offers an incredible variety of fields, providing many paths to knowledge. By enrolling, you become part of a vast student, academic, and scientific community. You should know that Charles University stands firmly on the side of reason, democracy, and human rights. On the morning of 24th February 2022, we were among the first to condemn Russian aggression and offered diverse assistance to Ukraine. Together, we understand the need to protect human rights and stand for justice, equal opportunities, sustainable development and a better future.

Charles University is an **internationally recognised institution**, belonging to the 4EU+ Alliance, where we are partners with two Parisian schools (including Sorbonne) and universities in Heidelberg, Copenhagen, Warsaw, Milan, and Geneva. For eight years, I was the Vice-Rector for Education, so I know the opportunities we offer to students. Challenges certainly await, but I believe you will meet all of them and succeed. At Charles University, we encourage you to pursue your dreams in ways that are fulfilling and inspirational. Have a great start!

Welcome to our university!

You met the admission requirements at Charles University and — by enrolling in your studies — you have officially become a university student. **What's next?**



↑ more information ↑

What happens after you enrol?

You can find the **most information** about your studies on the website of your respective faculty. Find out who your academic advisor is and they will assist you with specific questions. You can obtain your Charles University student **ID card** after enrolling in your programme at these **distribution points: in Prague** at the central CU Point (Celetná 13), as well as at the Faculty of Mathematics and Physics (Ke Karlovu 3) and at the Faculty of Law (náměstí Curieových 7). **In Hradec Králové** you can get your student ID at Na Kotli 1147 and in **Plzeň** at alej Svobody 76.

What are the benefits of your student ID?

Your ID is official proof of your affiliation with Charles University. (You can also obtain an ISIC licence, which entitles you to many student discounts both in the Czech Republic and abroad). This useful card has its own barcode and can be charged with credit. It can be used for payment in dining halls or faculty copy centres. Additionally, you can use it as a library card and as a tram pass. Most importantly, you cannot enrol in courses without your student ID and student number. It serves as access to the Study Information System (SIS), for which you will receive a password at the ID distribution centre.

Is it hard to connect to the internet and Wi-Fi?

Charles University is part of the eduroam (Education Roaming) Wi-Fi network, which includes many universities and various educational and cultural institutions, bureaux as well as train stations and healthcare facilities, both in the Czech Republic and abroad. One connection is all you need to access any eduroam network! All Charles University students can activate their connection using the format → personalnumber@cuni.cz. You can set your password at → <https://cas.cuni.cz>; detailed instructions for connecting and setting up your computer or phone can be found at → <https://eduroam.cuni.cz/en>.

RISKS TO YOUR STUDIES

- You exceed the maximum allowed study duration.
- You do not meet requirements set by the regulations for enrolment in the next phase of your studies (you do not earn enough credits).
- You do not fulfil the conditions for repeated enrolment in subjects.
- You do not take the state final examination (or defence of your final thesis) or resit exam dates.

What if I terminate my studies?

You will lose all benefits linked with your studies. This applies when you complete your studies and if you decide to discontinue your studies or if your studies are terminated for not meeting academic obligations. All situations related to studies are covered by the Higher Education Act, internal regulations of Charles University and individual faculties, especially the Study and Examination Regulations of Charles University and faculty-specific Organisation Rules.

What if I previously studied for free at a Czech public university?

From the start of your studies, each day you study in Czech without having to pay tuition is counted. If you have already studied at a Czech public university and do not plan to continue your studies there, we recommend officially discontinuing your studies at that university to prevent the unnecessary counting of "completed" days. The same applies if you change to a different CU faculty.

Reliable sources

At university, you will need access to a wide range of academic literature. Luckily, Charles University libraries offer not only books, journals, and other texts for your use but also a wide range of online electronic resources, accessible from anywhere.

It's easy to get started!

UKAŽ → Everything in One Place

You can search for both **books and journals** at CU libraries, as well as **electronic journals, e-books, articles, final theses (dissertations) and other academic information available at Charles University all in one place: our central discovery service UKAŽ** (ukaz.cuni.cz/en).

UKAŽ enables the direct management of your user account: tracking and extending loans, making requests (reservations) for books, exporting citations, saving search records for later, and much more. All you need to do to become a registered user is fill out an e-application.

If you're more interested in specific databases available online (electronic information resources, e-resources, or ER), you'll appreciate the **CU eResources Portal**. You'll find an overview of available databases there, which you can filter alphabetically, by field of study or by faculty. Records from the portal can also be found in **UKAŽ**. Most e-resources can be accessed from home through UKAŽ and the eResources Portal – the only thing you need is a valid password for the CU Central Authentication Service, or "CAS."

→ Where to look: ukaz.cuni.cz/en, eresources.cuni.cz




→ HOW TO REGISTER FOR LIBRARIES

To take advantage of all the services of Charles University libraries and manage your user account, you will need to register online. Registration for all CU libraries is done by filling out an e-application. You need to have one of the CU identification cards (you'll log in using your personal ID number found on your card and a valid password for CAS).

→ Where to look: <https://library.cuni.cz/e-application/>

"CUNI" → Button in Databases



If you come across this icon →  or a link with the text "CUNI link", feel free to click on it. This service will determine if you can access the full text of a specific article or book. Upon clicking, a list of links will appear where the document can be opened. If the text isn't available for Charles University, a link to a list of libraries at CU will appear. Choose your library and express your interest in the document — the library can either purchase it or obtain it from another library in the Czech Republic or abroad. Don't hesitate to ask.

→ If something isn't working or you have a question about electronic information resources, write to: admin-eiz@cuni.cz.

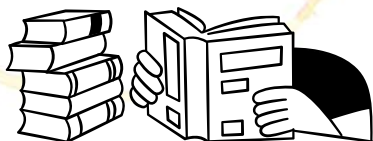
→ You can find more information at <https://library.cuni.cz/services/information-resources/> or on our Wiki, <https://link.cuni.cz/library-wiki>.

→ FACULTY AND OTHER UNIT LIBRARIES

At Charles University, you have access to numerous libraries that offer a wide range of services — printed books, copying, group and individual study rooms. In some, you can borrow board games, in others anatomical models! Each faculty has at least one library covering specific subjects. All of these can be used with a CU card and a completed e-application. A list of libraries, their contacts, and websites can be found at the Charles University Central Library's website.



← List of libraries, contacts, and websites



The adrenaline rush of sports

The ancient Greeks emphasised the importance of balance between mind and body. After a long lecture or a tough exam, you may want to hit the track or cool off in the pool. Whether you aim to stay fit, challenge yourself, or explore a new sport, **CU offers a wide range of options.**



Text: Jiří Novák, Martin Rychlík



The Rector's Sports Day at Charles University is a hugely popular event held each May.

→ The Rector's Sports Day ←

→ HRADEC KRÁLOVÉ

→ In Hradec Králové, two faculties — the Faculty of Medicine and the Faculty of Pharmacy — encourage students to explore activities such as **yoga**, **ice hockey**, **ice skating**, **weight training**, **tennis**, and **floorball**. They also offer options like **canoeing**, **lacrosse**, and **wall climbing**. As in other locations, the faculties' departments of physical education can provide guidance.

→ PRAGUE

- The CU Sports Centre in Hostivař, spanning nearly seven hectares, is situated on Bruslařská Street in Prague 15. It boasts a wide array of sports facilities, including an indoor swimming **pool**, a multipurpose **hall** for indoor sports, a **gym**, a **sauna**, outdoor **athletic fields**, tennis **courts**, **football** and **softball** fields, and more. While these facilities primarily serve the physical education needs of Charles University students, they are also open to extracurricular activities through affiliated clubs.
- Additionally, the Faculty of Physical Education and Sport at Charles University **rents** out specific sports facilities, providing opportunities for **tennis**, **basketball**, **football**, or **table tennis**. The Centre for Sports Activities for Physically Challenged Students at the Faculty of Physical Education and Sport offers **special equipment** and **assistants** for selected sports.
- The same faculty's **boathouse** on Vodácká Street (in Prague's Troja) features a slalom canal and a climbing wall.



For the latest public
entrance fees and pool
hours, please call:
→ [tel.: 272 082 235](tel:272082235) ←



→ PLZEŇ

- The Faculty of Medicine in Plzeň, Charles University, offers numerous sports opportunities, including **squash**, **volleyball**, **floorball**, **futsal**, **football**, **aerobics**, **tennis**, **basketball**, and even **badminton**.

→ OTHER LOCATIONS

- For individual or organised stays, CU offers several sports and recreational centres, including **Albeř**, **Dobronice**, **Horní Poříčí**, **Špindlerův Mlýn**, and **Pec pod Sněžkou**.

Where to sleep



Charles University offers **accommodation for its students** at 11 dormitories **in Prague**, three dormitories **in Plzeň**, two dormitories **in Hradec Králové**, and one dormitory **in Brandýs nad Labem**. You probably already know where you will be living during your studies, but do you know where you will find your fellow students?

Dormitories in Prague

Jednota Dormitory → Opletalova 38, Prague 1

Budeč Dormitory → Wenzigova 20, Prague 2

Švehlova Dormitory → Slavíkova 22, Prague 2

Jižní Město Dormitories — Vltava Dormitory → Chemická 953, Prague 4

Jižní Město Dormitories — Otava Dormitory → Chemická 954, Prague 4

Na Větrníku Dormitory → Na Větrníku 1932, Prague 6

Hvězda Dormitory → Zvoničkova 5, Prague 6

Kajetánka Dormitory → Radimova 35/12, Prague 6

Komenského Dormitory → Parlěfova 6, Prague 6

17. listopadu Dormitory → Pátkova 3, Prague 8

Hostivař Complex Dormitory → Weilova 2, Prague 10

Dormitories in Plzeň:

Bolevecká Dormitory → Bolevecká 34, Plzeň

Heyrovského Dormitory → Heyrovského 5, Plzeň

Šafránkův pavilon → alej Svobody 31, Plzeň

Dormitory in Hradec Králové

Jana Palacha Dormitory → Palachova 1137, Hradec Králové

Na Kotli Dormitory → Na Kotli 1147, Hradec Králové

Dormitory in Brandýs nad Labem

Nová Dormitory → Kralovická 1425, Brandýs nad Labem

Easily find the address of the nearest canteen where you can get delicious and healthy food at a reasonable price.

Canteens in Prague:

Faculty of Law Canteen → Náměstí Curieových 7, Prague 1

Arnošt of Pardubice Canteen → Voršilská 1, Prague 1

Albertov Canteen → Albertov 7, Prague 2

Budeč Canteen → Wenzigova 20, Prague 2

Kajetánka Canteen → Radimova 35/12, Prague 6

Troja Canteen → Pátkova 3, Prague 8

Jednota Canteen → Opletalova 38, Prague 1

(to undergo test operation in September)

Canteen in Plzeň:

UniMeC Canteen → alej Svobody 76, Plzeň

(this canteen is not operated by Charles University Dormitories and Canteens, but directly by the Faculty of Medicine in Plzeň)

Canteen in Hradec Králové:

Na Kotli Canteen → Na Kotli 1147, Hradec Králové.

Canteen in Brandýs nad Labem:

Nová Canteen → Kralovická 1425, Brandýs nad Labem



← Find out more about dormitories and canteens online!



Charles University aims for sustainability in its dormitories and canteens: it focuses on saving energy and water as well as recycling.



Tasty food

There have been significant changes at the canteens at Charles University. Many of them underwent renovation; the old Albertov Cafeteria was fully redesigned and will reopen in September. The reconstructed Jednota canteen on Opletalová Street is also due to open. Our university canteens feature a wide-range of new additions, including **pizzas** and **vegan dishes**.

"The goal of our canteens is to offer attractive food that is delicious but also based on dietary values and nutrition. There will be a revolutionary change in menu composition: of course, you will still find Czech classics, but daily menus will include vegan food and dishes like burgers, gyros, and more," says Petr Svoboda, the head of Charles University canteens. CU cafeterias will continue to produce their own baguettes, desserts, and beverages. *"We also plan weeks dedicated to cuisines from various regions around the world, including Italian, Greek or Mexican,"* Svoboda explains.



DID YOU KNOW THAT WE HAVE OUR OWN BEER?

→ **Some of our canteens and buffets have our beers on offer.**

Created at the Faculty of Mathematics and Physics, inspired by Ludolph's number, it's called pí-v-O. It's brewed in Benešov for CU in two varieties: Pěkný číslo and Slušné číslo (alcohol-free).

PRÁVNICKÁ CANTEEN

→ **Náměstí Curieových 7, Prague 1**

All canteens, including this one, will have a new menu: in addition to meat dishes, you will find vegetarian, vegan, and international cuisines. These will be prepared by specialists, so-called *chefs on the move*, who will visit all the canteens. In this one, you can look forward not only to pizza but also gyros and quality sushi.

TROJA CANTEEN

→ *Pátkova 3, Prague 8*

This canteen started its own pizza production last year. It became a hit and there are plans to expand its production to other CU cafeterias.

JEDNOTA CANTEEN

→ *Opletalova 1663/38, Prague 1*

After several years, this classic canteen reopens for a test run in September to be ready for the upcoming semester.



U ROTLEVŮ CAFÉ

→ *Kamzíkova 4, Prague 1*

This café is just a few steps away from the historic Carolinum! It offers seating throughout the year, including summer, in a quiet garden near the Old Town Square. You can choose from a selection of drinks, desserts (including gluten-free options), salads, or lunch menus.

NA KOTLI CANTEEN

→ *Na Kotli 1147, Hradec Králové*

They plan to diversify and lighten the menu even in this canteen in Hradec Králové where, for example, salad and vegan dish options will be expanded because who other than medical students should prefer a balanced and healthy diet, right?



Charles University

Map of CU faculties

CHARLES UNIVERSITY RECTORATE

Ovocný trh 560/5, Prague 1

CATHOLIC THEOLOGICAL FACULTY

1. Thákurova 676/3, Prague 6

PROTESTANT THEOLOGICAL FACULTY

2. Černá 646/9, Prague 1

HUSSITE THEOLOGICAL FACULTY

3. Pacovská 350/4, Prague 4

FACULTY OF LAW

4. nám. Curieových 901/7, Prague 1

FIRST FACULTY OF MEDICINE

Kateřinská 32, Prague 2

5. (The Dean's Office – the faculty also has workplaces in five Prague hospitals)

SECOND FACULTY OF MEDICINE

6. Šimůnkova 4/1596, Prague 8
7. Budínova 2, Prague 8
8. U Vojenské nemocnice 1200, Prague 6
9. V Úvalu 84, Prague 5
10. Plzeňská 130/221, 311
11. U Nemocnice 3, Prague 2
12. Bruslařská 10, Prague 15

THIRD FACULTY OF MEDICINE

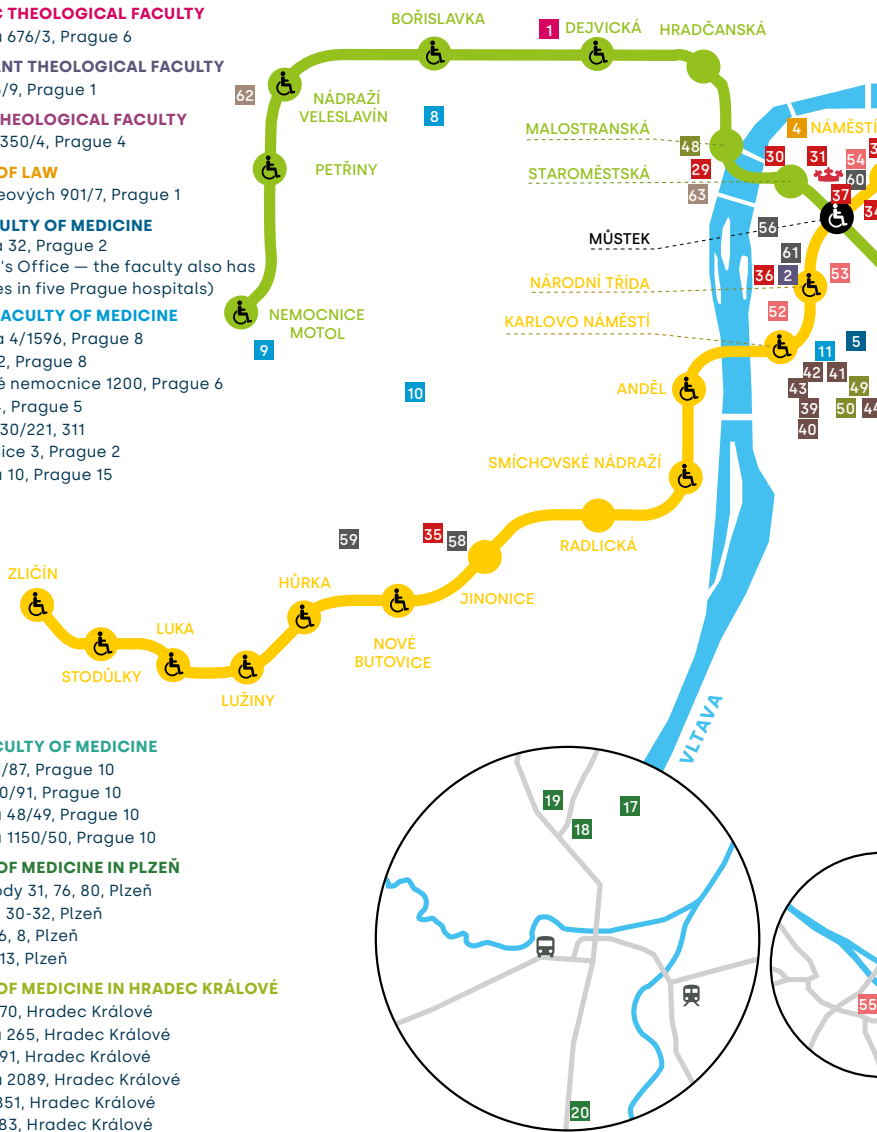
13. Ruská 2411/87, Prague 10
14. Ruská 2200/91, Prague 10
15. Šrobárova 48/49, Prague 10
16. Šrobárova 1150/50, Prague 10

FACULTY OF MEDICINE IN PLZEŇ

17. alej Svobody 31, 76, 80, Plzeň
18. Bolevecká 30-32, Plzeň
19. Lidická 4, 6, 8, Plzeň
20. E. Beneše 13, Plzeň

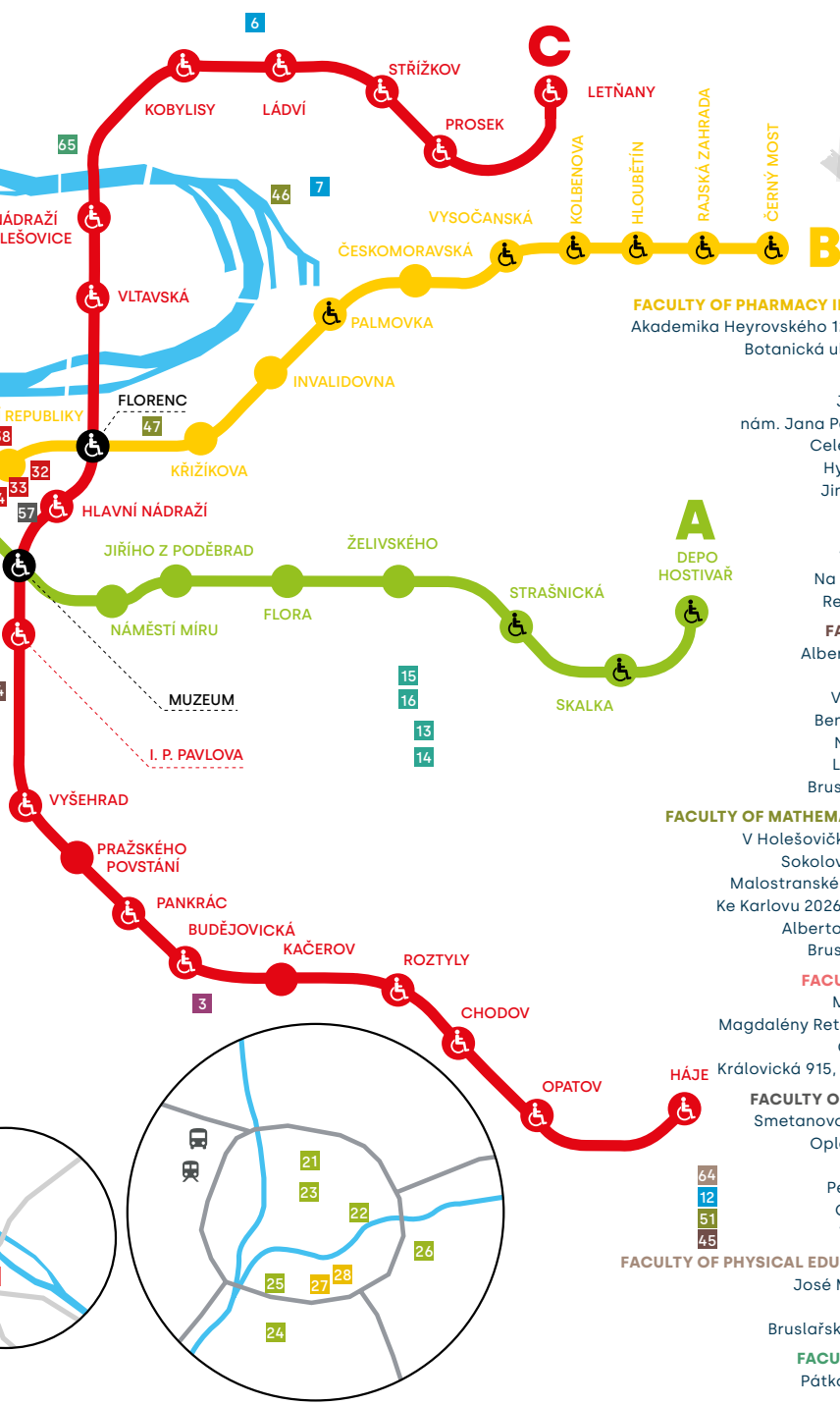
FACULTY OF MEDICINE IN HRADEC KRÁLOVÉ

21. Šimkova 870, Hradec Králové
22. Nezvalova 265, Hradec Králové
23. Na Hradě 91, Hradec Králové
24. Zborovská 2089, Hradec Králové
25. Sokolská 851, Hradec Králové
26. Záměstí 683, Hradec Králové



PLZEŇ

BRANDÝS



FACULTY OF PHARMACY IN HRADEC KRÁLOVÉ
 Akademika Heyrovského 1203, Hradec Králové **27.**
 Botanická ulice, Hradec Králové **28.**

FACULTY OF ARTS
 Josefská 6, Prague 1 **29.**
 nám. Jana Palacha 1/2, Prague 1 **30.**
 Celetná 13, 20, Prague 1 **31.**
 Hybernská 3, Prague 1 **32.**
 Jindřišská 27, Prague 1 **33.**
 Panská 7, Prague 1 **34.**
 U Kříže 8, Prague 5 **35.**
 Voršílská 1, Prague 1 **36.**
 Na Příkopě 29, Prague 1 **37.**
 Revoluční 26, Prague 1 **38.**

FACULTY OF SCIENCE
 Albertov 3, 6, 8, Prague 2 **39.**
 Hlavova 8, Prague 2 **40.**
 Viničná 5, 7, Prague 2 **41.**
 Benátská 2, 4, Prague 2 **42.**
 Na Slupi 16, Prague 2 **43.**
 Legerova 5, Prague 2 **44.**
 Bruslařská 10, Prague 15 **45.**

FACULTY OF MATHEMATICS AND PHYSICS
 V Holešovičkách 747/2, Prague 8 **46.**
 Sokolovská 49/83, Prague 8 **47.**
 Malostranské nám. 2/25, Prague 1 **48.**
 Ke Karlovu 2026/5, 2027/3, Prague 2 **49.**
 Albertov 2098/9a, Prague 2 **50.**
 Bruslařská 10, Prague 15 **51.**

FACULTY OF EDUCATION
 Myslíkova 7, Prague 1 **52.**
 Magdalény Rettigové 4, 8, Prague 1 **53.**
 Celetná 13, Prague 1 **54.**
 Královická 915, Brandýs nad Labem **55.**

FACULTY OF SOCIAL SCIENCES
 Smetanovo nábřeží 6, Prague 1 **56.**
 Opletalova 26, Prague 1 **57.**
 U Kříže 8, Prague 5 **58.**
 Pekařská 16, Prague 5 **59.**
 Celetná 20, Prague 1 **60.**
 Voršílská 1, Prague 1 **61.**

FACULTY OF PHYSICAL EDUCATION AND SPORT
 José Martího 31, Prague 6 **62.**
 Újezd 450, Prague 1 **63.**
 Bruslařská 1132/10, Prague 15 **64.**

FACULTY OF HUMANITIES
 Pátkova 2137/5, Prague 8 **65.**

Map proportions are approximate. Map: Richard Cortes.

Learn Czech with experienced teachers

Teaching Czech as a foreign **language is our specialty** at the Institute for Language and Preparatory Studies of Charles University, a dedication we've upheld **for nearly 70 years.**

We offer diverse Czech courses with varying lengths, intensities, and focuses. As the only full member of ALTE in the Czech Republic, we provide internationally recognised exams for Czech as a foreign language.



HOW JOEY FROM THE SWAMPS BROUGHT BENCE TO PRAGUE

*"By pure coincidence I found the song **Joey from the swamps** (Jožin z bažin) on the internet and I unexpectedly developed a strong liking for it. This journey eventually led me to an internship at the Institute of Language and Preparatory Studies at Charles University, where I have been working for nearly a year,"* says Bence Bolla, a graduate in Czech Studies from Budapest.

→ WE OFFER

Czech courses for all levels from A1 to C1.

Tailored to your needs, you can choose **study periods from two weeks to one year**. Choose from **in-person or online classes** with flexible scheduling. Our course types range from intensive and individual to evening classes, exam preparation, summer courses, and beginner options.

→ EXPERIENCE

our **advanced teaching methods** and resources that adapt seamlessly to your language level. Enhance your pronunciation through **specialised phonetics lessons** and enjoy **interactive learning** with online tools and whiteboards that bring excitement to your learning journey.

→ PLACEMENT

tests to determine the right language group for you. You can study **in person at our Prague centre** in Voršilská Street, in the Krystal centre near Nádraží Veveslavín metro station, or online.



→ LANGUAGE – STUDY – CAREER ←

- Want to **assess your language skills in Czech or English**? Our internationally recognised exams are ideal for academic, work, residency, or citizenship purposes both in the Czech Republic and overseas. We're a proud **member of the Association of Language Testers in Europe (ALTE)**, ensuring top-notch language testing quality.

CU Point

**YOUR HUB FOR
INFORMATION, ASSISTANCE,
AND STUDENT SUPPORT**



A **successful student** is a **satisfied student**: that is a principle embraced by Charles University. At CU Point, we provide comprehensive services for students (and others), fostering academic, professional, and personal development.

CU Point includes

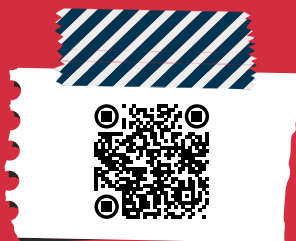
the CU ID Centre, Carolina Centre, Volunteer Centre, Career Centre, and Information Centre.

- We are the place to **find answers to your questions** and obtain your **student ID (ISIC)**.
- We ensure the smooth progression of your studies, **supporting you** through challenging **life situations**, academic responsibilities, and personal growth.
- We encourage student activities within clubs and voluntary initiatives. Looking to get involved and try something new? **Just ask!**



CU Point
Celetná 13
Prague 1

Phone: 224 291 850
E-mail: info@cuni.cz
[Web](#) ↓



Want to know the latest?
Don't miss our newsletter!
All students receive it automatically every month.

- We host dozens of **seminars and events** annually, spanning theoretical and practical knowledge, boosting mental and physical resilience, and caring for your well-being.
- **Sustainable development**, equal opportunities, and a safe environment are of the utmost importance to us.
- Most of **CU Point's services** are conveniently located at Celetná 13, right in the heart of Prague. For specific topics and availability, visit our website.

We're here for you!

Helping students in need

The Carolina Centre is located at 13 Celetná Street: should you find yourself in a difficult financial situation, don't hesitate and contact the centre for help. The centre can provide information about scholarships available at CU and contacts to foundations where it is possible to apply for financial aid.



"I come from a large family and my parents cannot afford to support me financially while I study. The Carolina Centre gave me advice on where to apply for help. When I was writing my thesis my laptop broke, they lent me one I could use instead," CU student Jana says.

Additional Counselling for Students

Students who find themselves in financially challenging situations can utilise socioeconomic counselling to gain information about support from various foundations and can also subscribe to information about part-time job opportunities within or outside of Charles University.

Carolina Centre

Celetná 13

Prague 1

E-mail: centrumcarolina@cuni.cz

Web: centrumcarolina.cuni.cz/en

Phone:

+420 224 491 850

+420 224 491 896

→ STUDENTS WITH SPECIAL NEEDS ←

If you are among students with **special needs** (including those with psychological difficulties or hearing, physical, visual, or other disabilities), you can access various services, the details of which can be found at the **Carolina Centre's website**. It is advisable to register by October 31 of the current year (but it can be done at any time during your studies). The new brochure "Guide to Studying

with Special Needs at Charles University" (available for download on the CC website) contains many useful tips and information about studying or the current state of accessibility in the main buildings and components of Charles University. If you decide to **study abroad**, you can also receive a scholarship for additional expenses associated with your studies through the Erasmus+ programme.

Psychological First Aid

For first-year students, it sometimes takes a while to get into the groove, to find a comfortable learning style, organise tasks, or learn how to cope with occasional setbacks or failures.



"During my studies, I found my anxieties had gotten worse. I turned to the Carolina Centre at CU for psychological counselling. I officially registered as a student with specific needs, and took advantage of the opportunity to decelerate my studies," says CU student Pavel, explaining how he found help.



APPLICATION → Don't Panic!!!
Available for download for Android and Apple.

Don't worry,
at Charles University we have your back.
You are not alone!

COUNSELLING AT THE CAROLINA CENTRE

Counselling services are available to all CU students, regardless of their faculty. You can turn to them for help with any problem, whether it's related to your studies, finances, or interpersonal relationships. Our experts are there to try to help and support you. Consultations are conducted individually and are free, including coaching.

Information and the option to book appointments online

E-mail: counsel@ruk.cuni.cz



FACULTY COUNSELLING CENTRES AT CHARLES UNIVERSITY

Various specialised counselling centres at individual faculties of Charles University also offer assistance. Their services are primarily intended for students and staff of the respective faculties, but sometimes, depending on arrangement, individuals from other parts of the university can use them. Counselling is free.

The list of faculty counselling centres in the Counselling Services section



Sustainability



Charles University has long been committed to deepening sustainable development activities.

In accordance with goals set by the United Nations (UN), we understand the concept of 'sustainable development' in its full complexity, encompassing not only care for the environment but also areas such as education and issues such as equal opportunities, health, quality of life, and innovation. Institutions like Charles University have much to offer. At the same time, through the education of future generations and research, we bear responsibility for further development, both at the national and international levels. Hence, we have a strategy and a two-year action plan, considering sustainable development in education, management, and science. We would be delighted if you joined us in fulfilling our visions:



COMPETITION

The **Grant Challenge for Sustainable Development** at Charles University is there for students who want to show that even small changes can contribute to a better world. Projects can focus on innovations in student life, the faculty or academic environments, and fulfilling the 'third role of the university.' **Sign up and don't miss the next round!**

FOOD PREPARATION

One area where CU found consensus among students, staff, and leadership is sustainable food preparation. By training professional chefs in the cafeterias, school menus now include **vegetarian and vegan dishes**, reducing Charles University's environmental footprint. Enjoy delicious and healthy meals that you can even take away in **reusable containers!**



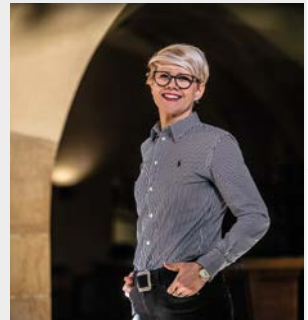
Equal treatment and equal opportunities

are principles that Charles University stands by, aiming to help all students overcome any obstacles they may encounter.

safety & equal opportunities

That said, there is always room to improve. We are implementing measures to balance study and family life, and we also consider gender balance to create an environment at the university where all people can feel welcome and safe. Our equal opportunities plan lays out a set of measures to which Charles University has committed for the coming years. These include: preventing bullying or sexual harassment and eliminating prejudice and unconscious biases. Within the academic community at Charles University, we all need to treat each other with consideration and respect.

As of January 2023, the interests of students and staff are also overseen by our university-wide **ombudswoman**, Kateřina Šámalová. In a recent interview at the university for Forum magazine, she explained how she can be contacted if needed: **"Write to me at ombudsmanka@cuni.cz, or use the anonymous form, or send a request through the university's administrative office. I usually get back to you **within 24 hours** and we will try to find a meeting time. During the meeting, I will listen to your concerns, **discuss** the various aspects of the **situation together**, and **outline potential solutions**. I emphasise that it is solely the decision of each notifier how they want their issue to be handled."**



Text: Jitka Jiříčková, Marcela Uhlíková



→ If, you find yourself in a situation where your interests or legal rights are threatened or being impeded due to inappropriate or unequal treatment, you can also contact **ombudspersons who operate at the faculties of Charles University.**







Follow and like!

Today, it's almost impossible to ignore social media, even for an institution born in 1348! That said, at CU you'll find lots to love across the social networks. **"CU" lives online!**



→ In Czech

-  @UniverzitaKarlova
-  @UniKarlova
-  @UniverzitaKarlova
-  @UniKarlova

→ In English

- @CharlesUniversityInPrague
- @CharlesUniPrg
- @CharlesUniversity
- @CharlesUni

→ Forum magazine

- @ForumUK
- @ukforumcz



Connect with our thriving community! Join over one hundred thousand of our followers on the professional network LinkedIn. Remember to also **follow individual faculties** at their own accounts online. **Don't forget to share!**

WE LOOK FORWARD TO MEETING YOU!

Forum

Charles University Magazine

News, reports and interviews with scientists, educators, and students at Charles University. Read the latest online or in print. Forum is published quarterly in Czech and once a year in English.



You can find current articles as well as Forum archives at ukforum.cz and ukforum.cz/en.



